

Knowing Who You Are: Métis history, identity, and the Métis Nation today

Brenda Macdougall
Chair Métis Research, University of Ottawa
for
National Collaborating Centre for Aboriginal
Health
Webinar Series, 27 January 2016

Traditional Stories of People Marrying Animals

The Man Who Married a Beaver



Kauitamishkumat

Illustrations by Cynthia Colosimo and Jolene Ashini

Innu text by Ishpashtien Nuna

English adaptation by Martha MacDonald

Translation by Anne Nuna Rich and Marguerite MacKenzie

Scientific text by Keith Chauk

Woman Who Married a Beaver



All My Relations as Worldview

- Family as a way of life
- Reciprocal Family Model (B. Medicine)
- How to be a human being (E.C. Deloria)
- Responsibility (as opposed to rights-based) discourse



Maternal Connections to Land

- Raphael Morin, Devil's Lake, SK 1887

“we live[d] in the land of my mother who was originally from the lands of [her] parents [because] most of the time [we] were in the ... lands of her relatives as we had no interest in the lands ... where my father and myself were born and raised.”

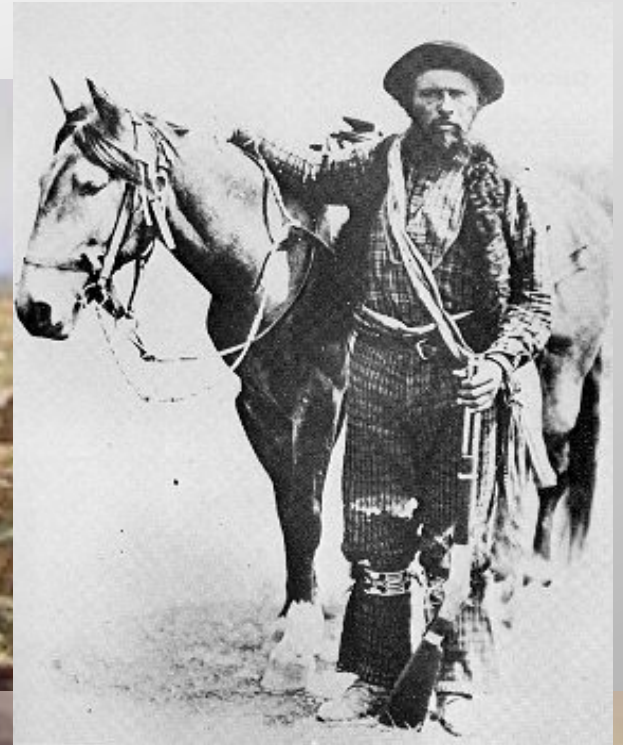


Maternal Connections to Land

- Johnny Grant, Edmonton, AB 1889
“We looked around the country. The weather was fine. I thought I had never saw such a fine country. I wrote to my wife and told her that I had travelled in many places in my time, but I had never seen any country [as] fine as Edmonton, the country of my birth and that we must come to live here.”



Stereotypes of Metis



Madeleine Laframboise



- Mother to the Laframboise family that stretches from Mackinac Island, MI to the Rocky Mountains, AB
- “the half-Ottawa wife of a murdered French trapper, owned a string of trading posts in the Grand River Valley. Reputed to be no ordinary woman — probably for succeeding in an exclusively male trade in the *pays d'en haut* or *savage country*” (A Snug Little Place/ Memories of Ada Michigan 1821 - 1930, Ada Historical Society/Jane Siegel, 1993, p. 23)

Charlotte & Nancy Small



- Sisters born at Ile a la Crosse, SK in late 18th century
- Managed to remain connected and ended up at Williamstown, ON together by mid-19th century

Reading Women into Family

- Sister Communities
 - The Smalls, Williamstown, ON
 - The Bottineaus, Qu'Appelle Valley, SK
 - The McGillis', Willow Bunch, SK
 - The Laframboise, Round Prairie, SK
- Godmothers to the Nation
 - Louise Solomon
 - Pélagie Morin



Knowing Who You Are



Family as a Social Determinant of Health

Security of the person

